



Collection

Studio
Dave Keune

STRAIGHTFORWARD AND TOUCHING: TAKING THE ROAM OF THE ROOM. 'Straight lines' are metaphorical to the modernist cultivation, to determined targets by likewise set minds. We had to be straightforward, had to mount our feasible civilization. Right now, in the aftermath of this modernist focus on producing states of the new, we require personalisation and an emancipated understanding. We demand personal access. We feel a need to relate to being straight, ask for its actual worth and meaning. The new starts within us and, currently, mounts on our personal emancipated sphere rather than upon our feasible civilization.

Modernist determination has proven to express strength by and of society while declaring to supply a fragile contact to its inhabitants. This legacy of modern design offers opportunities to personalise what seems severe; widens the scope of its determination. Although for hardliners, this being straight offers a rich set of variables to our expression. Lines can have many variable tones of voice: expressive, playful, monumental, abstract, figurative and so on. The challenge ahead is to face up to these variables. We're all willing designers but need to gain access to the matter proposed to us in order to take on this challenge.

Why would we have to obey to form based on cultural hierarchy or technical legacy? Basically: this masculine and modern one-liner demands to be branched accordingly! By deviating within our society's patterns, through wonder and creativity, we can pinpoint a specific value's meaning and worth. Why would we, when build something, set to work averse of playfulness, go for either robust or fragile, nature or nurture and be a master or a facilitator? Why would we opt for either one of these and how

do we determine our choice for one variable over another?

Studio Dave Keune challenges these conditions and plays upon the duel within a straight lines' determination in order to release its rich roam of sensibilities. Making aesthetics function: the spatial design of Dave Keune enhances the richness of aesthetics' usability and durability, exactly to offer value and meaning, in roaming the interior, exhibition and product design. His work rigorously manifests the sensitive variables that touch our physical relation's fundament and calls out for the sensible dynamics of our will. Keune democratises our experience as he supplies access to the variables of released straight lines. At that moment, straight lines can manifest within a range of vital, personal gestures. We position our room within a deeply authentic roam!

To illustrate some particular branches, we bump into the rather unconventional nurture of nature within; like the *Triptich* room divider that delicately unites heaven, earth and hell, the *Armor* sideboard that repositions our soil within a unification of machine and earth or think of the *Plint* lamp, utilizing a rather rough, standard form within an almost ephemeral skeleton. Taking his target group seriously, his new collection of *Standard Primitives* even allows people to take the pure variables within semi-finished goods.

The design of Dave Keune unifies the aesthetic and the functional, as aesthetics become a toolbox. Simultaneously, this toolbox democratically surpasses modernist governance and allows us to be straightforward.

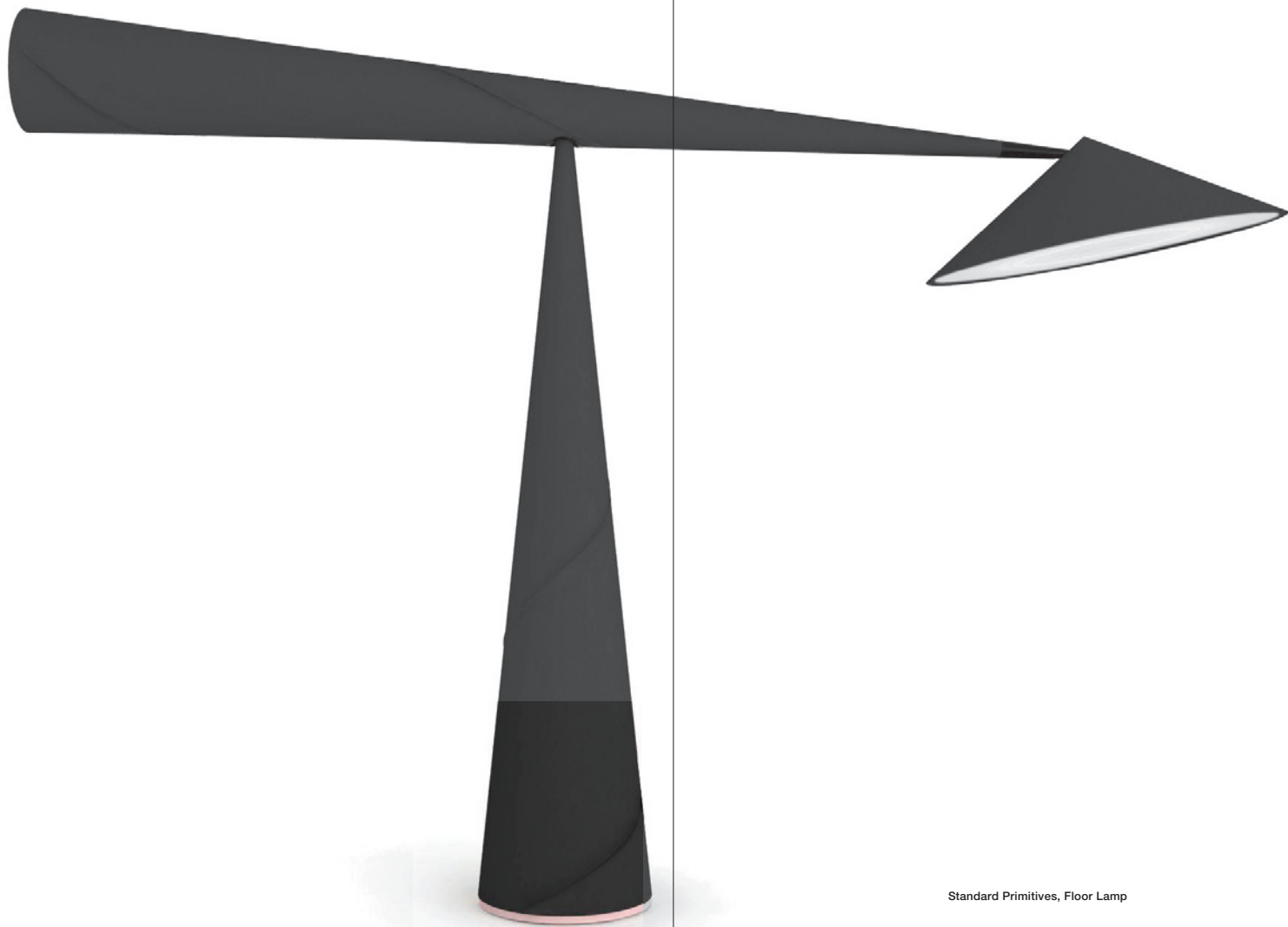
Mount your roam!

Freek Lomme, curator and writer.

Products
Projects

Collection

Studio
Dave Keune



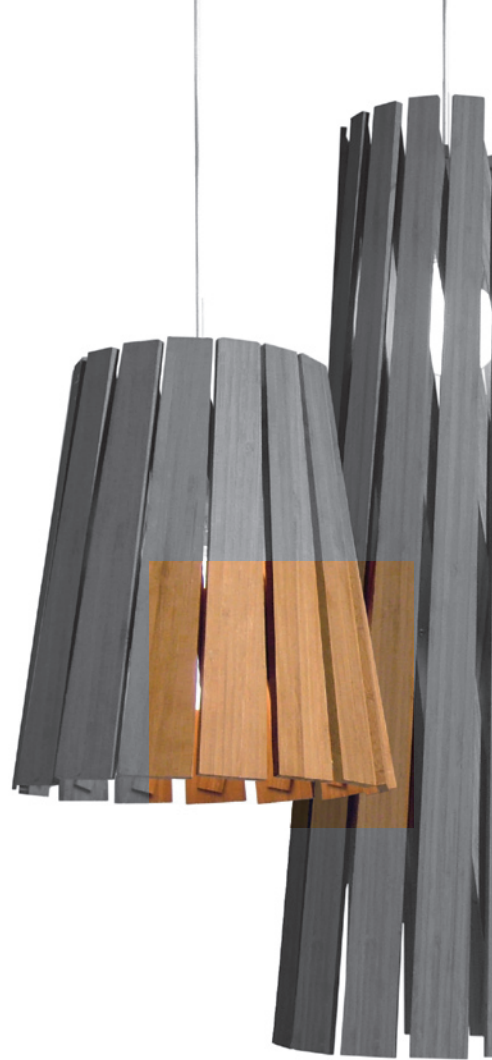
Standard Primitives, Floor Lamp

Standard Primitives, Sideboard





Plint, Lamp



Stealth, Chair and Hocker







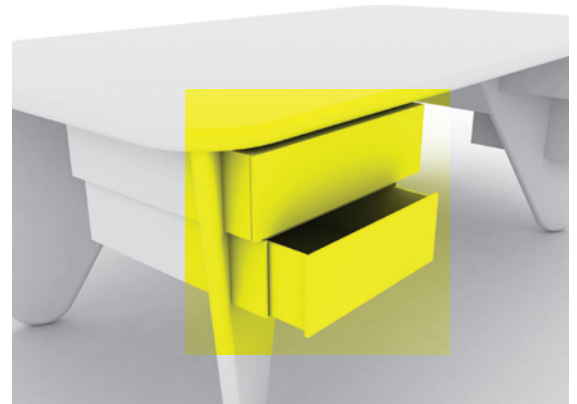
Winge, Cupboard





Standard Primitives, Table





Superdesk, Desk



Armor, Sideboard





Prefab, DIY Table and Chair



Prefab, DIY Chair



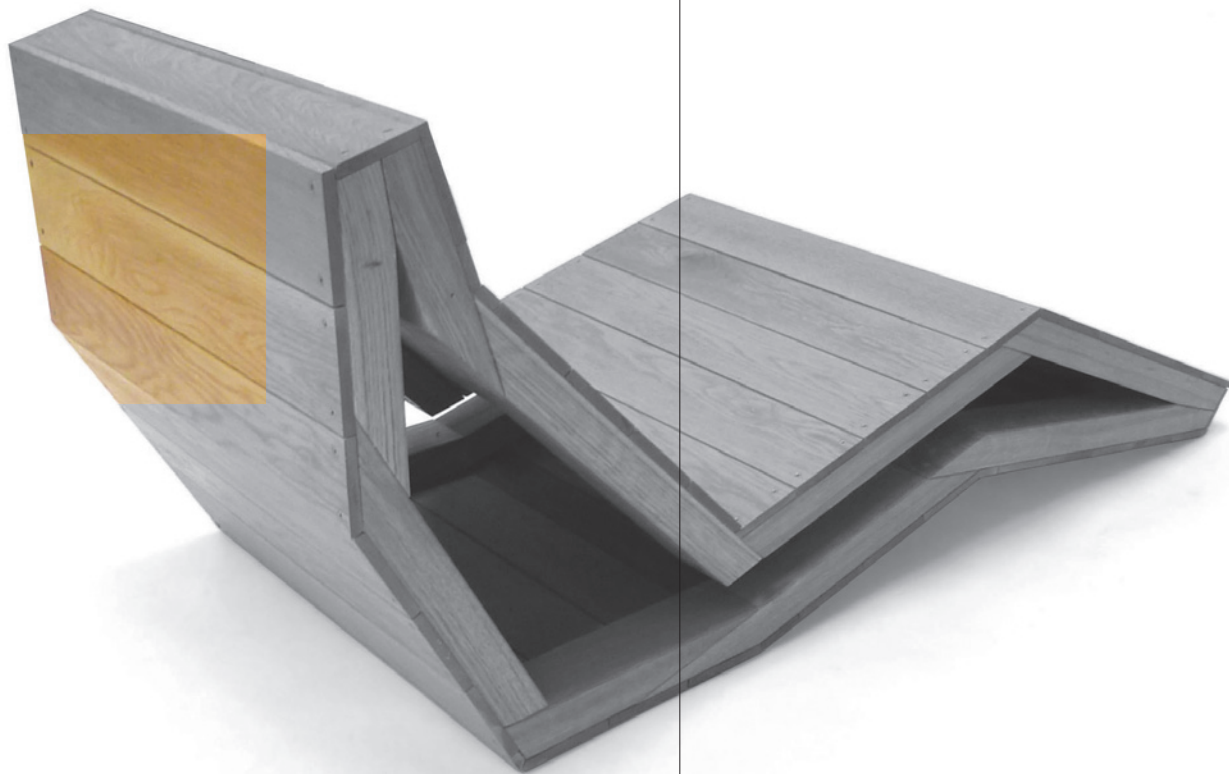


Prefab, DIY Sideboard

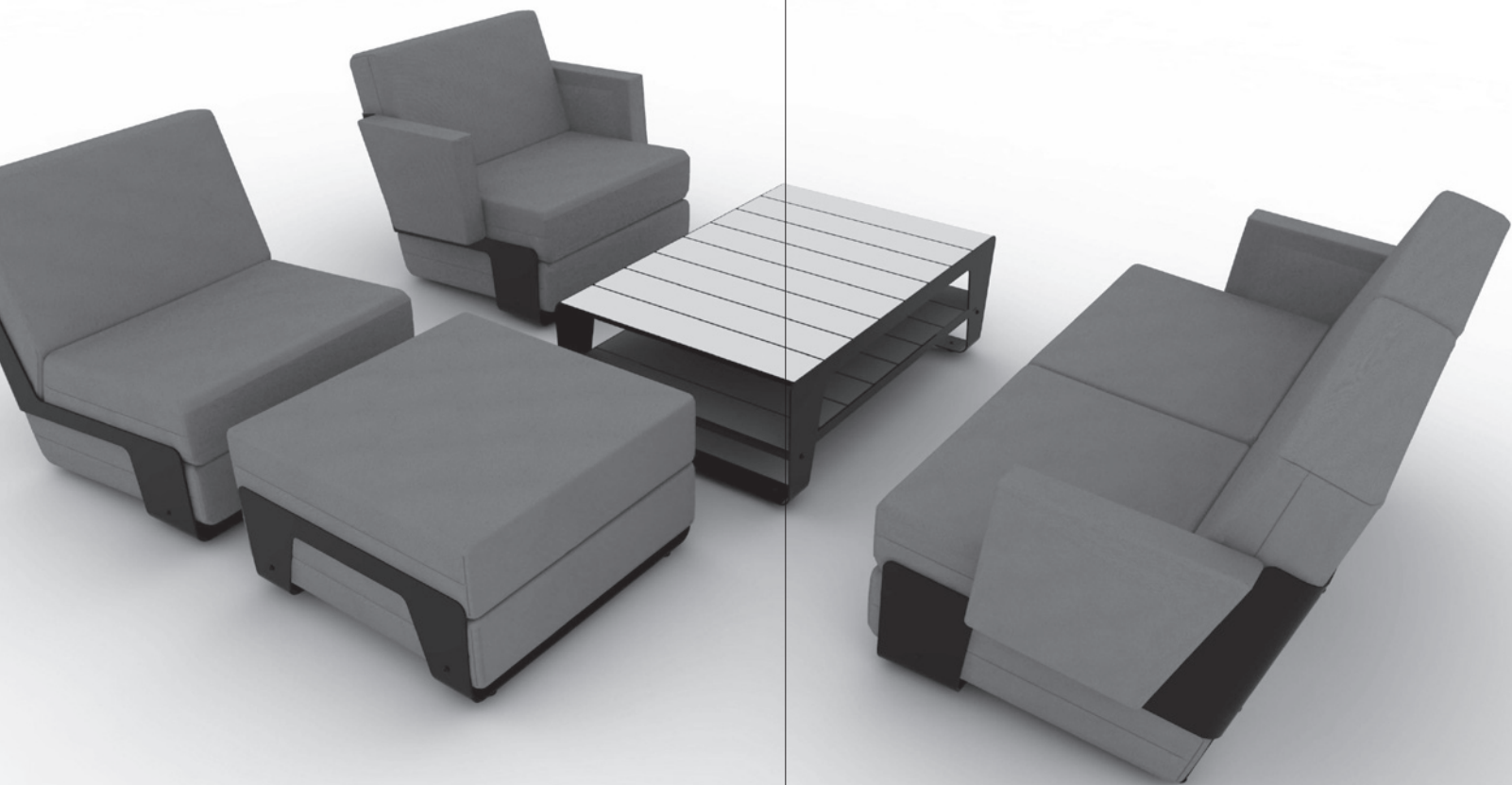
R-Series, Outdoor Table and Chair







CH-Series, CH001 Chaise Longue



Cush, Outdoor Table, Chair, Hocker, Couch



Nina's House, Childrens Crib, Playpen, Storage, Dresser

Product Overview



STANDARD
PRIMITIVES
SIDEBOARD

2011

ECHOPANEL (RECYCLED PET)
820 X 1150 X 1130 MM
DARK GREY, LIGHT GREY



STANDARD
PRIMITIVES
FLOOR LAMP

2011

PAPER, ALUMINUM, PMMA
2060 X 2950 X 850 MM
BLACK



STANDARD
PRIMITIVES
TABLE

2011

ASH WOOD, ALUMINUM, PMMA
1050 X 1050 X 370 MM
BLACK



STANDARD
PRIMITIVES
LAMP

2011

OAK WOOD, PMMA
980 X 450 X 450 MM
BLACK OR NATURAL OAK



**CUSH
OUTDOOR
CHAIR**

2010

**ALUMINUM, CUSHIONS
820 X 710 X 750 MM
YELLOW OR ECRU OR WHITE
OR BLACK**

In the collection of VBM Cushions



**CUSH
OUTDOOR
HOCKER**

2010

**ALUMINUM, CUSHIONS
700 X 710 X 390 MM
YELLOW OR ECRU OR WHITE
OR BLACK**

In the collection of VBM Cushions



**CUSH
OUTDOOR
COUCH**

2010

**ALUMINUM, CUSHIONS
720 X 1415 X 750 MM
YELLOW OR ECRU OR WHITE
OR BLACK**

In the collection of VBM Cushions



**CUSH
OUTDOOR
TABLE**

2010

**ALUMINUM, WOOD
1100 X 710 X 310 MM
YELLOW OR ECRU OR WHITE
OR BLACK**

In the collection of VBM Cushions

Products

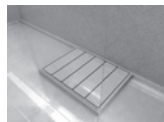


**RADII
BATHROOM
MIRROR**

2009

**GLASS
1200 X 90 X 550 MM
WHITE OR BLACK**

In the collection of Arte



**RADII
BATHROOM
SHOWER TRAY**

2009

**SILESTONE, GLASS
900 X 1200 MM
WHITE OR BLACK OR GREY OR
BROWN**

In the collection of Arte



**RADII
BATHROOM
WASHBASIN SET**

2009

**SILESTONE, OAK WOOD
1200 X 500 X 470 MM
WHITE OR BLACK OR GREY OR
BROWN, OAK**

In the collection of Arte



**RADII
BATHROOM
DOUBLE
WASHBASIN**

2009

**SILESTONE, OAK WOOD
2400 X 500 X 70 MM
WHITE OR BLACK OR GREY OR
BROWN, OAK**

In the collection of Arte

Products



**PLINT
LAMP**

2009

BAMBOO
400 X 270 X 450 MM
BROWN CARAMEL OR
DARK BROWN

In the collection of Perlei



**PLINT
LAMP**

2009

BAMBOO
900 X 280 X 500 MM
BROWN CARAMEL OR
DARK BROWN

In the collection of Perlei



**PLINT
FLOOR
LAMP**

2009

BAMBOO, STEEL
1200 X 280 X 500 MM
BROWN CARAMEL OR
DARK BROWN



**SFERE
VASE**

2008

PORCELAIN
260 X 260 X 200 MM
BLACK OR WHITE

In the collection of Perlei

Products

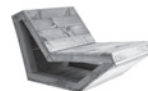


**NINA'S HOUSE
CHILDRENS
HOUSE**

2010

LACQUERED PLYWOOD
1240 X 1700 X 1100 MM
WHITE

In the collection of Planet Little



**LITTLE CHAIR
CHILDRENS
CHAIR**

2011

ASH WOOD
600 X 1460 X 650 MM
NATURAL OR WHITEWASH

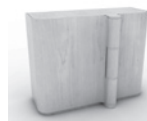
In the collection of Planet Little



**WINGE
CUPBOARD**

2008

LAMINATED WOOD
1900 X 450 X 1200 MM
BLACK OR WHITE

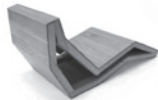


**WINGE
SIDEBOARD**

2011

LAMINATED WOOD
1120 X 490 X 870 MM
NATURAL AHORN

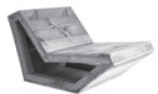
Products



CH-SERIES
CH001
CHAISE LONGUE

2009

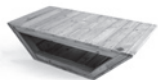
OAK WOOD OR MODIFIED WOOD
600 X 1460 X 650 MM
NATURAL OAK OR BLACK



CH-SERIES
CH002
OUTDOOR
CHAIR

2006

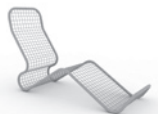
OAK WOOD OR MODIFIED WOOD
600 X 880 X 650 MM
NATURAL TIMBER OR NATURAL OAK
OR BLACK



CH-SERIES
CH003
OUTDOOR
TABLE

2006

OAK WOOD OR MODIFIED WOOD
1200 X 600 X 300 MM
NATURAL TIMBER OR NATURAL OAK
OR BLACK



WIRE
CHAISE
LONGUE

2008

STEEL
1500 X 900 X 540 MM
WHITE OR BLACK OR LIGHT GREEN

Products



STEALTH
LOUNGE CHAIR

2005

STAINLESS STEEL, LEATHER
820 X 820 X 980 MM
BLACK OR COGNAC

In the collection of Priveekollektie



STEALTH
HOCKER

2008

STAINLESS STEEL, LEATHER
440 X 660 X 660 MM
BLACK OR COGNAC

In the collection of Priveekollektie



ARMOR
SIDEBOARD

2009

OAK WOOD
1250 X 900 X 480 MM
NATURAL OAK

In the collection of Priveekollektie



SUPERDESK
DESK

2008

LACQUERED WOOD
1200 X 2000 X 780 MM
WHITE OR BLACK OR YELLOW

Products



**R-SERIES
R112
OUTDOOR
TABLE**

2005

**OAK WOOD, STEEL
800 X 1800 X 790 MM
WHITE, NATURAL OAK**



**R-SERIES
R56
OUTDOOR
CHAIR**

2005

**OAK WOOD, STEEL
560 X 410 X 870 MM
WHITE, NATURAL OAK**



**ORBIT
WALL MOUNTED
CLOCK**

2004

**ANODISED ALUMINUM
165 X 320 X 30 MM
WHITE, BLACK, RED, SILVER**



**ORBIT-R
WALL MOUNTED
CLOCK**

2008

**ANODISED ALUMINUM
240 X 240 X 30 MM
WHITE, BLACK, RED, SILVER**

Products



**PREFAB
LIL'DECKER
DIY CHILDRENS
CHAIR**

2004

**PLYWOOD
550 X 320 X 300 MM
RED**



**PREFAB
DIY CHAIR**

2003

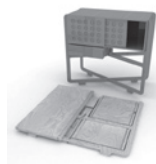
**PLYWOOD
430 X 410 X 810 MM
NATURAL**



**PREFAB
DIY TABLE**

2003

**PLYWOOD
800 X 1200 X 740 MM
RED**



**PREFAB
DIY SIDEBOARD**

2009

**PLYWOOD
1150 X 500 X 950 MM
RED**

Products



**FOYER TABLE
TABLE**

2007

**OAK WOOD
1600 X 1600 X 720 MM
DARK BROWN**

In the collection of The Foyer



**FOYER TABLE
SMALL TABLE**

2007

**OAK WOOD
800 X 800 X 720 MM
DARK BROWN**

In the collection of The Foyer



**CLOVER
COAT STAND**

2008

**STEEL
1600 X 700 X 700 MM
BLACK**

In the collection of Blits design

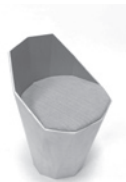


**TRILIGHT
MULTI-
FUNCTIONAL
LAMP**

2005

**POLYPROPYLENE
360 X 350 X 390 MM
WHITE OR YELLOW**

Products



**STOOL
CHAIR**

2010

**WOOD
820 X 820 X 980 MM
GREEN, PINK**



**DK001
CHAIR**

2003

**PLYWOOD, ALUMINUM,
MODIFIED WOOD
450 X 450 X 1200 MM
DARK BROWN, WHITE, SILVER**



**TRIPTICH
ROOMDIVIDER**

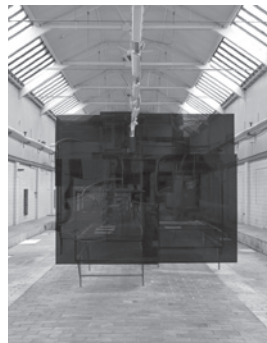
2003

**NYLON, PMMA
2200 X 200 X 1660 MM
RED, WHITE**

Products

Projects

PRESPECIFICS ACCESS X!
EXHIBITION DESIGN,
DUTCH DESIGN WEEK,
ONOMATOPEE



PRE-SPECIFICS: ACCESS X! is about the X-factor in environments and products. The project showcases luring concepts by contemporary artists, designers,

architects, and provides insight into their strategies. The blue facade breaks open when one enters the space to reveal the



content of the exhibition. The exhibition was shown during the Dutch Design Week 2010 in Eindhoven. In collaboration with Onomatopee.

Photography: Ingrid Swalve

Materials: Acrylic + Timber
Size: 45.0 x 10.0 x 8.0 m

DE FOYER, GRAND CAFE +
ARTSTORE, TILBURG



The project *De Foyer* resides in the city theatre of Tilburg in the Netherlands. By combining or contrasting design, materials, and color with existing elements and influences in the building, this interior integrates with the existing interior design from the sixties. In collaboration with Sander Mulder.

Various Materials
Size: 7.0 x 22.0 x 6.0 m



Projects

FINN, HOTEL LOBBY, ALMERE



This lobby has been designed for *Finn*, a Hotel in the city centre of Almere that offers luxury accommodations for a low budget. The goal was to show and define the hotels overall identity while attracting and inviting people to enter. With its distinguishing color gradient and bold interplay of lines the wall panels and counter are eyecatchers of the space. In collaboration with Erik Bakker.

Material: Modified Wood
Size: 3.3 x 12.0 x 3.5 m



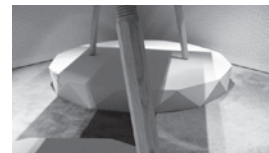
LAUGHING PROHIBITED!
EXHIBITION DESIGN, DUTCH
DESIGN WEEK, ONOMATOPEE



Laughing prohibited! engaged with humour as a technical tool for creatives. Humour consists in many tones of voice and many shapes to visualise. *Laughing prohibited!* asked the visitor to take a further look into the matter: what does the work put forth? Participants were Atelier van Lieshout, Ted Noten, Anthony Kleinepier, Daniel Eatock, Erwin Wurm and many others. In collaboration with Onomatopee and Novak.

Various Materials
Size 46.0 x 6.0 x 4.0 m

Projects



TEMPORARY EXHIBITIONS,
MODEFABRIEK, PEDESTALS



Photography Hilde Koenders

The dutch organisation *Modefabriek* is prime organiser of a trendsetting fashion event that is held twice a year at the Amsterdam RAI. After request of Hilde Koenders we created several pedestals in various sizes that have been designed and created for them to fit their specific style and entourage. The image shows an example of the setting they were used in.

Kristin Hult 314
 Leah Weiss 330
 Margaret Korman 374
 Marika Kira 379
 Parker Kira 379
 Kelly Matheson 383
 James Matheson 383
 Caitlin Nelson 387

Various Materials
Size: 20.00 x 9.00 x 2.70 m

Lift-Off was an annual design exhibition initiated and organized by Studio Dave Keune in collaboration with Onomatopoe. The exhibition featured designs of renown and upcoming dutch designers. As Raw Color, Gabriel Lester, Jo Meesters, Ester Stocker, IJm Studio and many others. All shown in the office of Buro philip van den hurk in Eindhoven.



Work by Jo Meesters (top) and Raw Color (bottom).



Photography Raul Kramer

Material: B-board
Size: 20.0 x 9.0 x 2.7 m



IMAGES
STUDIO
DAVE KEUNE

TEXT
FREEK LOMME

PHOTOGRAPHY
RAOUL KRAMER
HILDE KOENDERS
WIM RUIGROK
INGMAR SWALUE

GRAPHIC DESIGN
NOVAK

PRINTING
LECTURIS

SUPPORTED BY
MINISTERIE VAN
ECONOMISCHE
ZAKEN,
STICHTING
STOKROOS AND
SOFA FONDS

EDITION
250

© 2011



Studio Dave Keune is based in
Amsterdam, the Netherlands.

www.davekeune.com
info@davekeune.com

STRAIGHT LINES symbolize man's course to cultivate, to focus on determined targets by a specific mindset. Within this frame, a vibrant poetical field can manifest, adding up to our human condition. Just within this straight human condition, designer Dave Keune operates. Straight lines can have many dynamics. As a condition, straight lines can result in a range of expressive forms, playful to monumental, abstract to figurative. As a condition, straight lines can result in a range of dynamic applications, by man or machine guided motion.

The design of Dave Keune targets both esthetical as functional values. While developing his design, either products or environments, Keune operates through layers of research, development and production. By applying skilled craftsmanship within the production process, he aims for high-qualified results, in usability and durability. – Freek Lomme –

